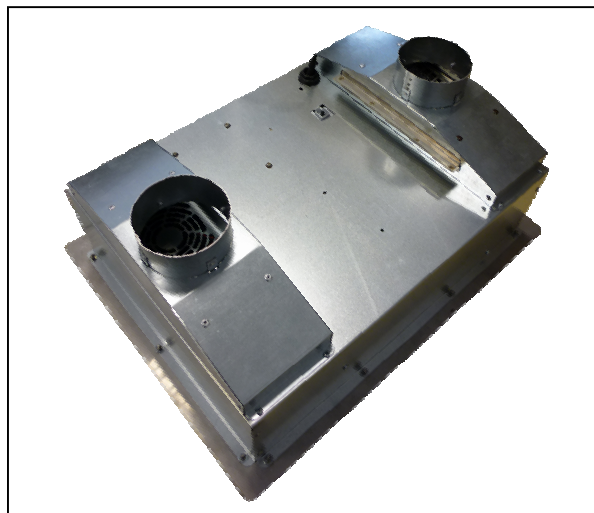


DGIC 3000

Built-In Plancha

Integrated control pannel



• **Stainless steel outer casing** with chamfered edges (Inox AISI 304) **incorporating a grill surface in a multi layer composite material** (stainless steel for food product F17 Mnb, AISI 436 - conform to standard NFA36-711).

• **Copper Coil 280mm**

• **Glass touch control panel — touchpad.** On/Off, (+/-) to select the power with screen, 3 programmable touches P1, P2, P3 (your choice of power to be memorized).

• **Temperature:** from 50°C up to 280°C.

• **Power supply:** 210V-230V AC 50-60Hz.

• **1m80 sector cable** provided (without plug).

• **Standards:** EN 60335-2-36 (complies with European standards for safety of electrical appliances), EN 55011 and EN 550142 (CEM).

• **Installation dimensions** to built-in: 410mm x 550mm.

• **Option:** Spatula provided.

Cool air entrance pipe and warm air evacuation pipe available.

• **Created and Made in France.**

DGIC 3600	
Position	Temperature (°C)
1	50
2	70
3	90
4	110
5	130
6	150
7	170
8	190
9	210
10	230
11	250
12	280



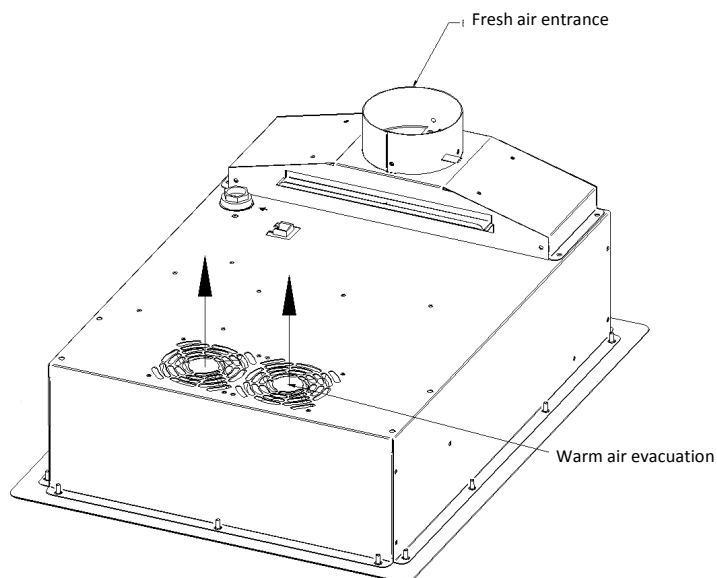
www.adventys.com

SPECIFICATION SHEET

DGIC 3000

Built-In Plancha

Integrated control panel



Installation dimensions to built-in

